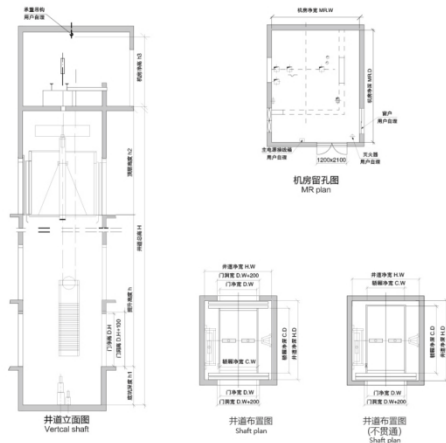


# 核岛电梯标准土建布置图

Nuclear Island Elevator Standard layout

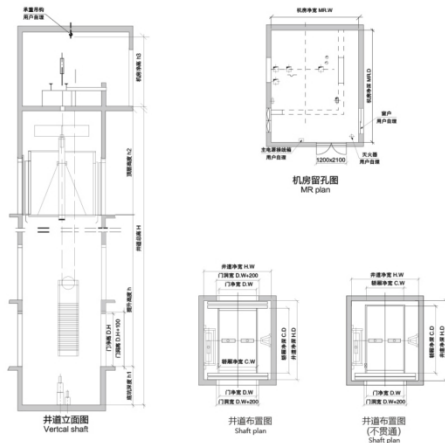


额定载重量 (kg) Rated Load	速度 (m/s) Speed	轿厢净尺寸 (mm) C.WxClxH	开门尺寸 (mm) D.WxH		井道净尺寸 (mm) H.WxH.D		机房净尺寸 (mm) MR.WxMR.DxH		道坎深度 h1 (mm)	顶层高度 h2 (mm)
			双开门 2CD	单开门 1CD	单梯 Single	双梯 Double	单梯 Single	双梯 Double		
1000	0.5	1300x1750x2200	1300x2100		2400x2230	5050x2230	3100x3800x2800	6500x3800x2800	1500	4300
1600	0.5	1500x2250x2200		1500x2100	2750x2840	5750x2840	3500x4000x2800	6500x4000x2800	1600	4300
2000	0.5	1500x2700x2200		1500x2100	2750x3290	5750x3290	3500x4500x2800	6500x4500x2800	1600	4300
3000	0.5	2200x2800x2400		2200x2400	3600x3190	7450x3190	4500x4900x2800	8500x4900x2800	1700	4500
5000	0.25	2400x3600x2400		2400x2400	4200x4190	8650x4190	5000x5500x2800	9000x5500x2800	1700	4500

(本资料仅供参考设计选用参考, 详细参数以技术图纸为准。)  
The data is for design reference only. For the detailed parameters, please take the technical drawing as the criterion.

# 洁净电梯标准土建布置图

Clean Elevator Standard layout



额定载重量 (kg) Rated Load	速度 (m/s) Speed	轿厢净尺寸 (mm) C.WxClxH	开门尺寸 (mm) D.WxH		井道净尺寸 (mm) H.WxH.D		机房净尺寸 (mm) MR.WxMR.DxH		道坎深度 h1 (mm)	顶层高度 h2 (mm)
			双开门 2CD	单开门 1CD	单梯 Single	双梯 Double	单梯 Single	双梯 Double		
1000	0.5	1300x1750x2200	1300x2100		2400x2230	5050x2230	3100x3800x2800	6500x3800x2800	1500	4300
1600	0.5	1500x2250x2200		1500x2100	2750x2840	5750x2840	3500x4000x2800	6500x4000x2800	1600	4300
2000	0.5	1500x2700x2200		1500x2100	2750x3290	5750x3290	3500x4500x2800	6500x4500x2800	1600	4300
3000	0.5	2200x2800x2400		2200x2400	3600x3190	7450x3190	4500x4900x2800	8500x4900x2800	1700	4500
5000	0.25	2400x3600x2400		2400x2400	4200x4190	8650x4190	5000x5500x2800	9000x5500x2800	1700	4500

(本资料仅供参考设计选用参考, 详细参数以技术图纸为准。)  
The data is for design reference only. For the detailed parameters, please take the technical drawing as the criterion.